

# Ellab Academy 2018



*Your way to  
increased  
knowledge*

# Ellab Academy Globally

## Venues

Ellab Academy operates from Training Centers around the world. Today we are present in Denmark, Germany, France, Benelux, US, Philippines, UK/Ireland and Dubai.

Our courses are mainly aimed at, but not limited to, validation engineers and Q/A officers as well as people from pharma/food technology areas. If requested, training courses can also be arranged in other countries and/or directly at customer sites.

For further details and more information about course offerings, please see our training schedule on page 6 and 7. To contact a specific Training Center, please use the contact information below.

### 1. Ellab Academy Denmark

The training center in Denmark is located in Hillerød at Ellab Headquarters and conducts courses in Danish and English for Ellab operators and system administrators.

Courses: Basic, Advanced, Food & Pharma

Contact: Jan Eriksen  
E-mail: [jer@ellab.com](mailto:jer@ellab.com)  
Phone: +45 4452 0506

### 2. Ellab Academy Germany

The training centers in Germany are located in Hamburg and Munich and conduct courses in German for Ellab operators and system administrators.

Courses: Basic, Advanced & Food

Contact: Corinna Oetjen  
E-mail: [coe@ellab.com](mailto:coe@ellab.com)  
Phone: +49 4286 92662 45

### 3. Ellab Academy France

The training center in France is located in Compiègne and conducts courses in French for Ellab operators and system administrators.

Courses: Basic & Advanced

Contact: Gaëlle Meynckens  
E-mail: [gme@ellab.com](mailto:gme@ellab.com)  
Phone: +33 344 2302 57

### 4. Ellab Academy Benelux

The training center in Benelux is located in Hengelo (NL) and conducts courses in Dutch for Ellab operators and system administrators.

Courses: Basic, Advanced & Food

Contact: Martin Demmer  
E-mail: [benelux@ellab.com](mailto:benelux@ellab.com)  
Phone: +31 74 205 12 34

### 5. Ellab Academy United Kingdom

The training centers in UK are located in Manchester and Dublin and conduct courses in English for Ellab operators and system administrators.

Courses: Basic & Advanced

Contact: Patrick Mckimm  
E-mail: [pmc@ellab.com](mailto:pmc@ellab.com)  
Phone: +44 1612 416431

### 6. Ellab Academy USA

The training centers in USA are located in Boston, Denver and Raleigh and conduct courses in English for Ellab operators and system administrators.

Courses: Basic & Advanced

Contact: Kristina Harnke  
E-mail: [kha@ellab.com](mailto:kha@ellab.com)  
Phone: +1 303 425 3370

## Training

As industry standards become more strictly regulated, Ellab recognizes the increasing demand for training and knowledge sharing between Ellab operators and system administrators. The collaboration and education increases the safety and efficient handling of our validation solutions.

EA offers comprehensive training courses for employees from the pharmaceutical and the food industry, as well as service providers, by covering all aspects of Ellab's hardware, software, and applications. Our courses are conducted by experienced Ellab staff.

We are proud of the quality of our courses and instructors and have been successfully offering Ellab Academy for the last ten years. Those who have participated, have seen firsthand how passionate we are about making the courses as challenging and educational as possible.

### 8. Ellab Academy Dubai

The training center in Dubai is located in Dubai Airport Free Zone and conducts courses in English for Ellab operators and system administrators.

Courses: Basic, Advanced, Food & Pharma

Contact: Gladys Apiado  
E-mail: [dubai@ellab.com](mailto:dubai@ellab.com)  
Phone: +971 643211256

### 7. Ellab Academy Philippines

The training center in the Philippines is located in Filinvest, Alabang Muntinlupa City/Manila, and conducts courses in Tagalog/English for Ellab operators and system administrators.

Courses: Basic, Advanced, Food & Pharma

Contact: Melanie-Anne Bago  
E-mail: [mab@ellab.com](mailto:mab@ellab.com)  
Phone: +632 621 9174



# Standard Courses

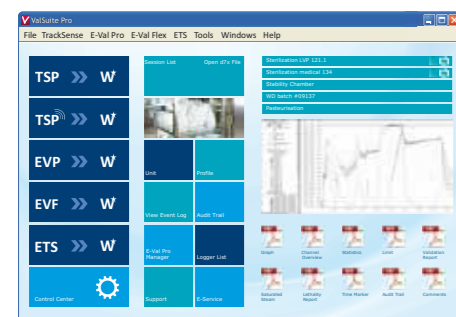
## Basic

is designed for everybody who has recently started working with Ellab validation systems and have limited knowledge of the basics.

The objective of the training is to provide operators with enough skills to understand the hardware configurations and basic programming of ValSuite™ software. You will be trained in TrackSense® and E-Val Pro hardware set-up and configuration, how to use the various sensors and probes for temperature, pressure, humidity, conductivity and CO<sub>2</sub> measurements, and how to position sensors correctly in the application.

Proper handling and maintenance of Ellab equipment to prevent costly downtime will also be presented.

The training also includes general set-up and operation of ValSuite™ software including installation of software, desktop configuration, database operation and pre-programming functions, such as time markers, user profiles and unit configurations. In addition, you will be introduced to basic analytical tools such as F<sub>0</sub> calculation, statistics and a few basic reports will also be discussed.



## Advanced

is designed for anyone who already works with or administrates Ellab validation systems. The objective of this training is to provide ValSuite™ operators with the skills to understand and perform advanced operation and analysis of data.

One will receive extended training about specific features of Ellab validation systems related to different applications, software settings, programming features and specific reports within ValSuite™ software.

All the necessary information will be given to enable you to set up an optimal validation procedure. In addition the full validation documentation including IQ/OQ will be presented.

Participants will be trained in practical use of the many analytical tools. We will discuss and explain the various functionalities of the software and will work with the advanced functions and reports in detail.

You will be shown how to set up a fully automatic, a semi-automatic and a manual temperature calibration system by choosing correct equipment to get maximum performance. The importance of each component in the configuration set-up will be described in depth. Based on real application studies, temperature calibrations of probes will be demonstrated using ValSuite™ software and the calibration report will be discussed in detail.

# Application Courses

## Food

is ideal for individuals working in the Food industry, who operates or administrates Ellab validation systems with basic knowledge from practical use and from participating in the Basic and/or Advanced training course.

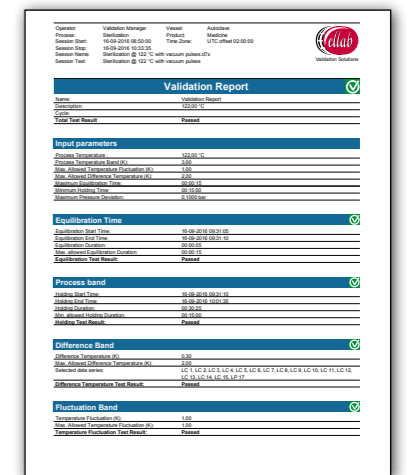
The objective of this intensive training is to provide additional focus on ValSuite™ software functions related to the Food industry. This training will include specific hardware functions and specific reports that can be generated for the Food industry.

The Food Application course will leave the trainee with the knowledge and skills about specific features of Ellab validation systems that are related to the industry. One will understand how to choose

appropriate hardware configurations, apply correct software settings and programming features within ValSuite™, and will be able to create Food industry related reports.



By the end of the training, one will be capable of setting up an optimal validation procedure for various food applications.



## Pharma/Medical

is specifically for individuals working in the Pharmaceutical or Medical Industries using Ellab validation systems and has already obtained basic knowledge from practical use by participating in the Basic or Advanced training course.

The objective of the three day intensive training is to provide one with additional skills to understand all software functions and reports related to the Pharma/Medical Industries along with a focus on specific hardware operations and operating procedures.

The Pharma/Medical Application course will leave the trainee with advanced knowledge and skills about specific features of Ellab validation systems that are related to the industry. One will understand how to choose appropriate hardware configurations, apply correct

software settings and programming features within ValSuite™, and will be able to create Pharma/Medical industry related reports.

By the end of the training, one will be capable of setting up an optimal validation procedure for various Pharma/Medical applications.



# Ellab Academy Schedule & Registration

Venue	Course	Schedule 2018	Description*	Language
Denmark Hillerød	Basic	March 5th to 6th	Hardware training	English/Danish
Denmark Hillerød	Advanced	March 7th to 9th	Software & hardware training	English/Danish
Denmark Hillerød	Advanced	June 6th to 8th	Software & hardware training	English/Danish
Denmark Hillerød	Basic	September 17th to 18th	Hardware training	English/Danish
Denmark Hillerød	Advanced	September 19th to 21st	Software & hardware training	English/Danish
Denmark Hillerød	Advanced	November 14th to 16th	Software & hardware training	English/Danish
Germany Hamburg	Food	April 5th to 6th	Food technology training	German
Germany München	Basic	April 18th	Software basics & hardware training	German
Germany München	Advanced	April 19th to 20th	Software & hardware training, Calibration Management, Validation Workshop	German
Germany Hamburg	Basic	October 17th	Software basics & hardware training	German
Germany Hamburg	Advanced	October 18th to 19th	Software & hardware training, Calibration Management, Validation Workshop	German
France Compiègne	Basic/Advanced	June 12th to 14th	Software & hardware training	French
France Compiègne	Basic/Advanced	November 27th to 29th	Software & hardware training	French
UK Manchester	Basic	January 23rd	Hardware training	English
UK Manchester	Food	March 20th to 21st	Software & hardware training	English
UK Dublin (IR)	Pharma	May 15th to 16th	Software & hardware training	English
UK Manchester	Advanced	November 14th	Software training	English
Benelux Hengelo (NL)	Basic	Every third Wednesday of the month	TrackSense® Pro software & hardware training	Dutch
Benelux Hengelo (NL)	Basic	March 14th to 15th	Software basics & hardware training	Dutch
Benelux Hengelo (NL)	Basic	October 3rd to 4th	Software basics & hardware training	Dutch
Benelux Hengelo (NL)	Food	TBD	Food application	Dutch
USA Boston	Basic/Advanced/Pharma	February 7th	Hardware and software training	English
USA Denver	Basic/Advanced/Pharma	February 22nd	Hardware and software training	English
USA Raleigh	Basic/Advanced/Pharma	May 15th	Hardware and software training	English
Philippines Manila	Food	August 22nd	Software & hardware training, Food application	English/Tagalog

Philippines Manila	Advanced	August 23rd	ValSuite™ software training	English/Tagalog
Philippines Manila	Pharma	August 24th	Software & hardware training, Pharma application	English/Tagalog
UAE Dubai	Pharma / Medical Basic + advanced level	April 15th to 19th	Software & hardware training, Pharma / Medical applications	English
UAE Dubai	Food Basic + advanced level	September 2nd to 6th	Software & hardware training, Food application	English
UAE Dubai	Pharma/Medical Basic + advanced level	December 9th to 13th	Software & hardware training, Pharma / Medical applications	English

\* Further information and how to register can be found at [www.ellab.com/services/ellab-academy](http://www.ellab.com/services/ellab-academy)

### Important Information

All trainings typically include a mix of presentations, “hands-on” exercises with focus on group/individual interaction and you will be given detailed introductions to relevant applications.

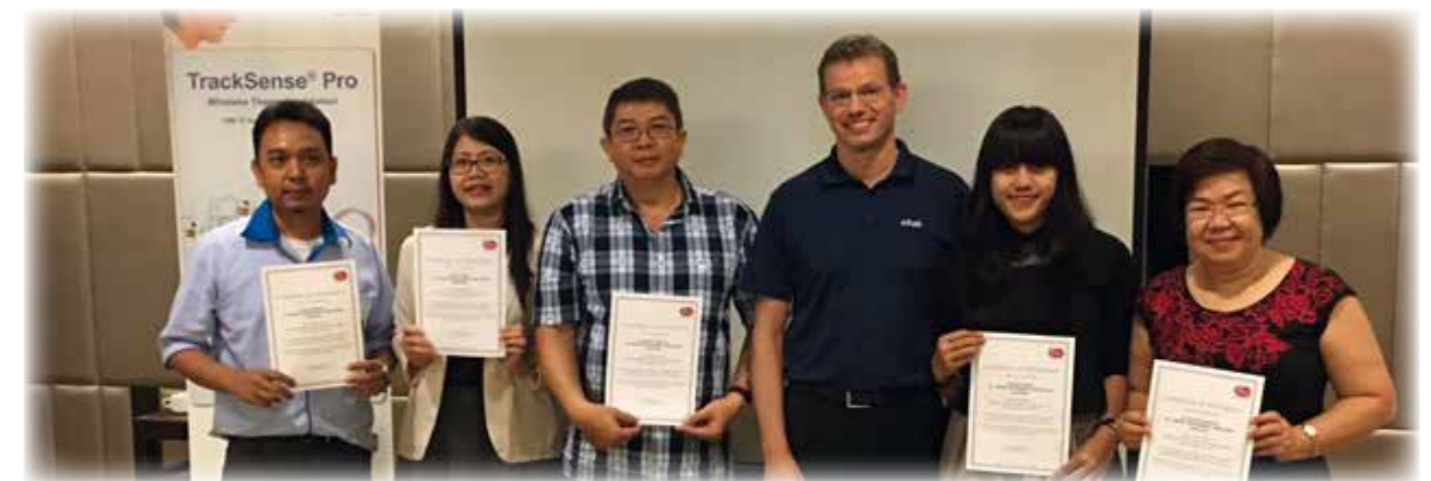
There will be an opportunity to exchange ideas and experiences with fellow industry colleagues and it is encouraged to bring your own data sessions (d7x files) for evaluation and discussion.

Depending on the venue, a visit to Ellab’s calibration lab facility can be arranged. This is where all initial factory calibrations and the recalibration of TrackSense® Pro, E-Val Pro, ETI and ETS are performed.

To receive the full benefit of each course it is required that you bring your laptop preferably with pre-installed ValSuite™ software.

Each training course will usually be limited to 7-10 participants, to ensure the courses are as interactive as possible.

Each participant will receive a certificate of attendance that verifies the theoretical and practical contents of the training and will prove your skills as a trained Ellab operator.



### Registration

Register directly on our webpage: [www.ellab.com/services/ellab-academy](http://www.ellab.com/services/ellab-academy) by completing the registration form and submitting it directly to Ellab Academy.

### Price

Please contact us for actual pricing. The price will include training, training materials, lunch and refreshments, but does not include hotel accommodation and transportation.

### Accommodation

For hotel reservations in Denmark please contact: Jan Eriksen, E-mail: [jer@ellab.com](mailto:jer@ellab.com)  
For accommodation at our various other training venues please use contact details listed on page 2 and 3.

# Ellab Academy 2018



## About Ellab Academy

For more than 10 years Ellab Academy has provided specialized knowledge to Ellab users and staff throughout the world. From the early days Ellab Academy was designed as a platform providing extended knowledge to our thousands of operators. At the same time these courses have served as important meeting points for exchange of experience. We learned a lot from the industries – and course participants about the Ellab Validation Solutions. A perfect win-win situation to keep everybody up to date.

Until recently, most of these courses have been conducted at Ellab Headquarters in Denmark. Due to an increased global response, Ellab has decided to set up education and learning centers around the world.

This Ellab Academy 2018 catalog describes these centers and our various courses covering everything from basic and advanced hardware & software courses to specific application oriented courses for the food and pharma/medical industry. Depending on topics courses are held in Denmark, Germany, France, Benelux, US, Philippines, UK/Ireland and Dubai and are mainly aimed at validation engineers and Q/A officers as well as people from pharma/food technology areas.

## Ellab A/S

Since the late 40s Ellab A/S has been a leading manufacturer of process validation and monitoring systems used in the food, medical device and pharmaceutical industries.



Validation Solutions

## Ellab A/S

Trollesmindeallé 25  
DK-3400 Hilleroed  
Denmark  
P: +45 4452 0500  
F: +45 4453 0505  
[info@ellab.com](mailto:info@ellab.com)  
[www.ellab.com](http://www.ellab.com)